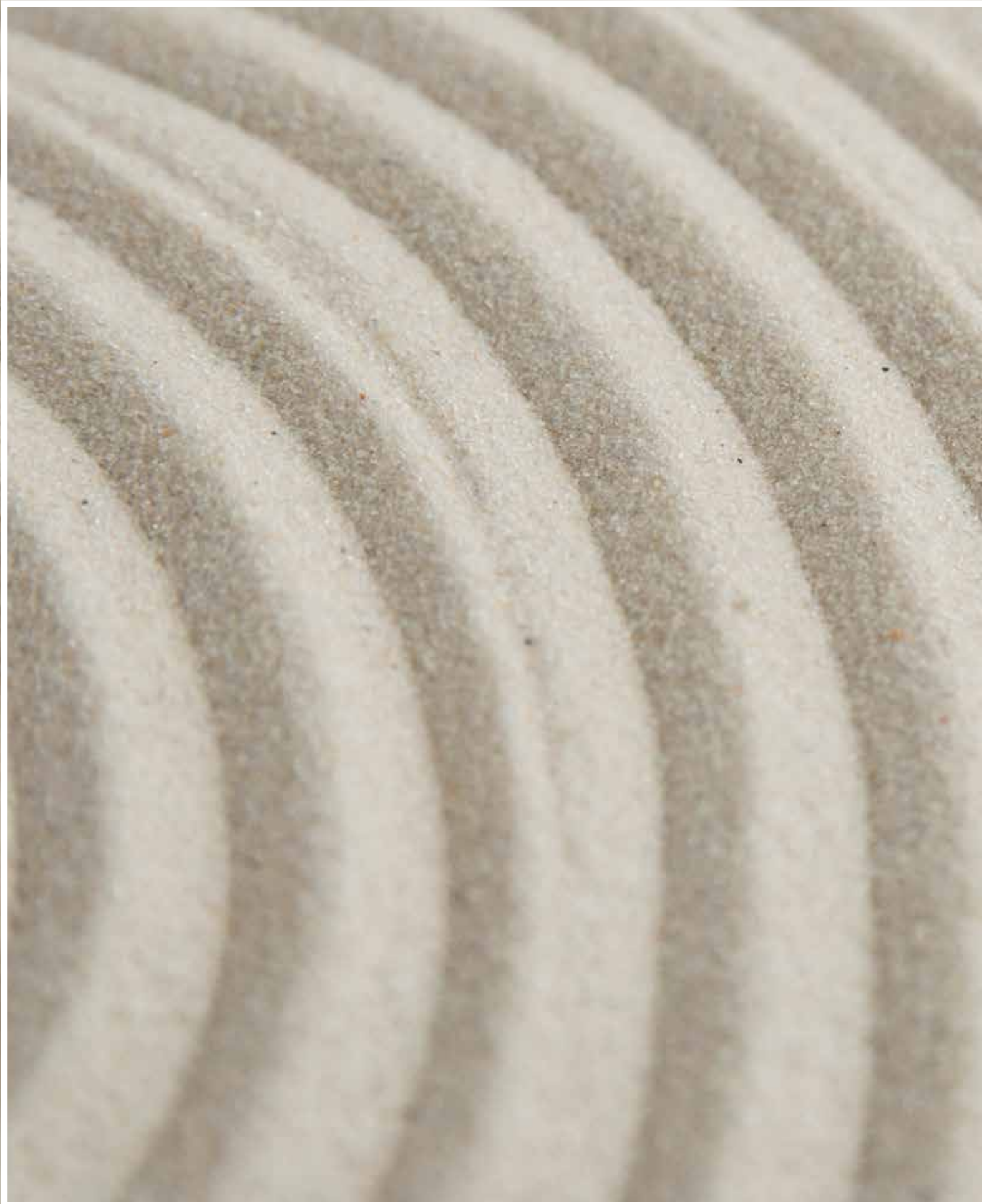


WELL-BEING STARTS FROM THE HEAD






WELL BEING STARTS
FROM THE HEAD

EVERY RITUAL HAS ITS OWN TIMING
ITS GESTURE, ITS SCENT
HAIR CARE IS A RITUAL


EASY CARE T MAKES IT NATURAL,
INTENSE, EMOTIONAL.

IT IS A SENSORY PATH, MADE OF FRAGRANCES,
TEXTURES, COLORS, FOR BOTH THE GIVER
AND THE RECIPIENT OF THE TREATMENT.

EASY CARE T CONTAINS THE WHOLE
ARTÈGO EXPERIENCE IN ONE SENSATION:
WELL-BEING. CARE FOR BEAUTY THANKS TO
PHYTOTHERAPY AND AROMATHERAPY.







THE PURIFYING
AND RELAXING EXPERIENCE
OF PHYTOTHERAPY
AND AROMATHERAPY

PHYTOTHERAPY IS THE THERAPEUTIC ROUTINE THAT USES PLANTS OR PLANTS EXTRACT TO PERPETUATE CARE AND WELL-BEING.

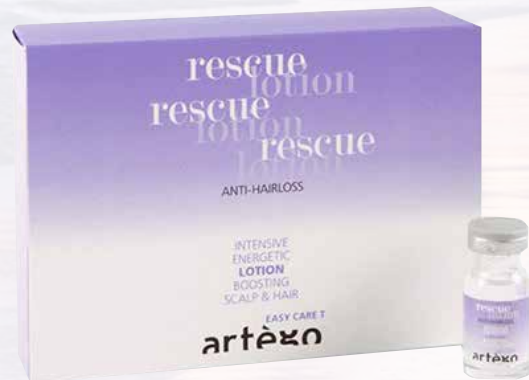
AROMATHERAPY IS THE THERAPEUTIC ROUTINE THAT USES ESSENTIAL OILS, THOSE EVOCATIVE, SCENTED, VOLATILE EXTRACTS OF PLANTS THAT CONVEY CARE AND WELL-BEING, RECALL PLEASANT MEMORIES AND EVOKE PLEASANT FEELINGS AMONG THE 5 SENSES.



RESCUE
ANTI HAIR-LOSS
TREATMENT

IMMEDIATELY VISIBLE
RESULTS

WITH CLINICALLY TESTED ACTIVE PRINCIPLES



RESCUE

A UNIQUE TREATMENT

TWO CLINICALLY TESTED ACTIVE PRINCIPLES:
TRICHOGEN AND VITAPLEX



WITH VITAPLEX™

RESCUE SHAMPOO

GENTLE AND ENERGIZING
FOR SCALP AND HAIR

SIZE: 250ML

- IT ADDS ESSENTIAL ELEMENTS TO THE HAIR VITAL CYCLE
- IT MAKES THE HAIR THICKER

WITH TRICHOGEN™

RESCUE LOTION

ENERGIZING AND REVITALIZING
FOR SCALP AND HAIR

SIZE: 8ML AMPOULE - 10 AMPOULES IN A BOX



- IT RE-ESTABLISHES THE HAIR NATURAL CYCLE
- IT REDUCES HAIRLOSS

AROMATHERAPEUTIC AND PHYTOTHERAPEUTIC PRINCIPLES

PHYTOTHERAPEUTIC PRINCIPLES

SEAWEED
CONTAINS MINERAL SALTS AND BOOSTS THE EFFECTIVENESS OF THE INGREDIENTS (VITAPLEX™).



GINSENG
GINKGO AND BURDOCK STIMULATE CAPILLARY CIRCULATION (TRICHOGEN™)



SOY
CONTAINS PROTEINS AND ENZYMES THAT HELP HAIR REGROWTH (TRICHOGEN™).



CINNAMON
HAS STRONG ANTI-BACTERIAL PROPERTIES (TRICHOGEN™)

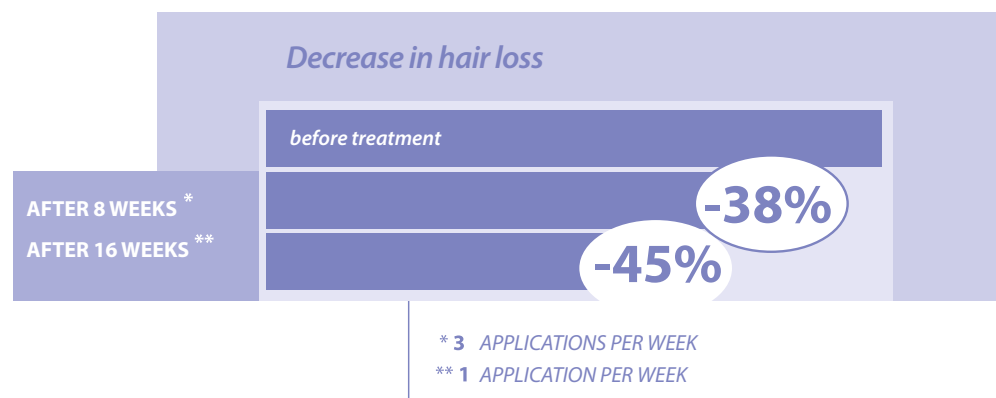


AROMATHERAPEUTIC PRINCIPLES



VETIVER*
FRAGRANCE THAT ENHANCES CONCENTRATION AND MENTAL STRENGTH.
*PERENNIAL SWEET GRASS WITH ORIENTAL ORIGINS

VISIBLE RESULTS RIGHT FROM THE FIRST USE





CLARITY
ANTI DANDRUFF
TREATMENT

FEEL GOOD, FEEL COMFORTABLE
IN EVERY CIRCUMSTANCE

VISIBLE RESULTS RIGHT FROM
THE FIRST APPLICATION



CLARITY

A QUICK AND DECISIVE TREATMENT



CLARITY FLUID

PRE-TREATMENT BALANCING FLUID FOR THE SCALP

SIZE: 100ML

- IT REBALANCES THE SCALP AND HELPS DANDRUFF DETACHMENT
- IT SOOTHENS AND CALMS SCALP IRRITATIONS WITH A FRESH SENSATION



CLARITY SHAMPOO

REFRESHING FOR SCALP AND HAIR WITH RELAXING AND REGENERATING PROPERTIES

SIZE: 250ML

- IT COUNTERACTS DANDRUFF FORMATION
- IT REGULATES SCALP CELLS REGENERATION

VISIBLE RESULTS

RIGHT FROM THE FIRST APPLICATION



CLARITY MASK

RE-BALANCING
FOR SCALP AND HAIR CLEANSING

SIZE: 150ML

- IT SLOWS DOWN DANDRUFF FORMATION
- NO ALCOHOL FOR A BETTER SCALP BALANCE
- IT RELIEVES THE SCALP

AROMATHERAPEUTIC PRINCIPLES

SANDALWOOD
THE AROMA BRINGS
PEACE AND SERENITY.
IT FAVORS CREATIVITY
AND INTUITION



TOBACCO
THIS AROMA CONVEYS
WARMTH, WELL-BEING
AND RADIANCE



PHYTOTHERAPEUTIC PRINCIPLES

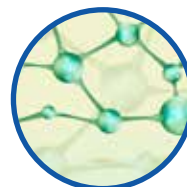
TEA TREE OIL
CLEANS DEEPLY
AND EFFECTIVELY
WITH A BALANCING
EFFECT



WHITE THYME
ASTRINGENT
AND STRENGTHENING
ACTION



PIROCTONE OLAMINE
POWERFUL
ANTI-BACTERIAL,
ANTI-INFLAMMATORY AND
ANTIMICROBIAL ACTION





BALANCE
SEBUM
TREATMENT

PERFECT BALANCE
INSIDE AND OUTSIDE

HERBAL MIX
TO PURIFY THE SCALP AND THE HAIR



A UNIQUE HERBAL MIX



BALANCE SHAMPOO

RE-BALANCING ACTION
FOR SCALP AND HAIR

SIZE: 250ML - 1000ML

- IT GENTLY REMOVES SEBUM IN EXCESS
- PURIFYING AND ASTRINGENT ACTION



BALANCE MASK

ULTRA-BALANCING
FOR SCALP AND HAIR

SIZE: 150ML

- FATTENING ACTION
- NO ALCOHOL FOR A BETTER SCALP RE-BALANCING
- PERFECT FOR SENSITIVE SCALPS

PHYTOTHERAPEUTIC PRINCIPLES

ROSEMARY
IT INVIGORATES THE HAIR



SWEET ORANGE
IT HAS A CLEANSING EFFECT
ON THE SCALP



WHITE THYME
IT HAS TONING AND
ASTRINGENT PROPERTIES



AROMATHERAPEUTIC PRINCIPLES

PATCHOULI
A NATURAL
STRESS-REDUCING
AROMA,
THAT RELAX
NATURALLY



BULGARIAN ROSE
ITS SCENT CONVEYS
A FEELING
OF PROFOUND
HAPPINESS





DREAM
RECONSTRUCTION
TREATMENT

AN EXTRAORDINARY LINE

KERATIN AND SILK PROTEINS
FOR DREAMY HAIR



FROM DREAM TO REALITY

5 PRODUCTS TO CARE FOR DAMAGED HAIR



DREAM PRE-SHAMPOO

DEEP PURIFYING ACTION FOR SCALP AND HAIR
PH 8, SLIGHTLY ALKALINE

SIZE: 1000ML

- ITS DEEP ACTION BRINGS HAIR BACK TO NATURE, ELIMINATING IMPURITIES OR RESIDUES OF PREVIOUS TREATMENTS
- IT PREPARES THE HAIR TO THE RECONSTRUCTION TREATMENT



DREAM K-FLUID

RICH KERATIN FLUID REPAIRING AND NOURISHING ACTION

SIZE: 500ML

- COMBINED ACTION
- IT RESTRUCTURES THE HAIR BOTH ON THE SURFACE AND IN DEEP

PHYTOTHERAPEUTIC PRINCIPLES

JOJOBA OIL
PURIFYING AND PROTECTIVE FOR THE SKIN, WITH CONDITIONING ACTION



AVOCADO OIL
WITH CALMING AND NOURISHING PROPERTIES



WASABI
IT SOOTHES THE SCALP AND HELPS THE COLOR LAST LONGER



SERICIN
IT MAKES A PROTECTIVE LAYER OVER THE HAIR MAKING THE HAIR SOFT, SHINY AND VELVETY





DREAM MASK

INTENSIVE
RESTRUCTURING
TREATMENT

SIZE: 150ML - 500ML

- IT REPAIRS AND SOOTHES THE HAIR'S EXTERNAL STRUCTURE



DREAM SHAMPOO POST

SLS FREE GENTLE
CLEANSER

SIZE: 250ML - 1000ML

- IT PROTECTS COLORED AND BLEACHED HAIR FOR A BETTER COLOR HOLD
- IT ACTS AS A RESTRUCTURING TREATMENT FOR THE HAIR THANKS TO KERATIN



DREAM K-LOTION

SEALING,
PROTECTIVE,
HYDRO-REGULATING
LOTION

SIZE: 12X8ML

- IT NOURISHES THE HAIR
- IT FAVORS COLOR LASTING
- IT MAKES THE HAIR SHINE

AROMATHERAPEUTIC PRINCIPLES



CINNAMON

STIMULATING AND
WARMING ESSENCE.
IT CONVEYS POWER
AND STRENGTH



YLANG

AN ESSENCE THAT GIVES
WARMTH AND RESTORES
SELF CONFIDENCE.
IT COUNTERACTS STRESS
AND INSOMNIA



VANILLA MOU

SOOTHING AND RELAXING
EFFECT.
IT HARMONIZES BODY
AND SOUL

A photograph of several vibrant pink orchids resting on a white, fluffy towel. The background is a warm, dark brown. The scene is framed by a white border. A semi-transparent white rectangle is overlaid in the center, containing text and decorative lines.

CELEBRATE BEAUTY
WITH EASY CARE T
RITUALS

LET YOUR CLIENTS
LIVE A SENSORY WELL-BEING EXPERIENCE,
FOR BOTH HAIR AND SOUL

FAMILY	SERVICE	PREPARATION STEP 1	TREATMENT STEP 2
DREAM	REPAIR RECONSTRUCTION	 PRE-SHAMPOO	 K-FLUID + K-LOTION + MASK
	COLOR SAVE COLOR PROTECTION AND MAINTENANCE	 SHAMPOO POST	 K - LOTION
	COLOR SAVE FAST IMMEDIATE SHINE AN COLOR PROTECTION		 K - LOTION
CLARITY	CLEANING ANTI DANDRUFF	 FLUID + SHAMPOO	 MASK
	SCRUBBING DRY SCALP	 SHAMPOO	 MASK
BALANCE	BALANCING ANTI-SEBUM	 SHAMPOO	 MASK
	EQUILIBRIUM HYPERHIDROSIS	 SHAMPOO	 SHAMPOO
RESCUE	ENERGIZING ANTI HAIRLOSS	 SHAMPOO	 LOTION

REPAIR
RECONSTRUCTION

STEP 1
PREPARATION



Wet the hair and apply a suitable amount of **Dream Pre-Shampoo**.



Massage gently for 2 - 3 minutes.



Wash it out and repeat.

STEP 2
TREATMENT



Measure out **Dream K Fluid** in a bowl, then apply on washed, towel-dried hair using a brush.



Wait for developing time (15 minutes).



Rinse with abundant water and towel dry.



Apply **K Lotion** (mixed in a ratio of 1:3 with **Dream Mask** - ex. 1 ampoule + 24g **Dream Mask**) and leave for 5 minutes.



Rinse and style as desired.

COLOR SAVE
COLOR PROTECTION
AND MAINTENANCE

STEP 1
PREPARATION



Wet the hair and apply a reasonable amount of **Dream Shampoo Post**.



Massage gently for 2-3 minutes.



Wash and apply again.

STEP 2
TREATMENT



Apply and distribute **K Lotion**.

DREAM

COLOR SAVE FAST
IMMEDIATE SHINE
AND COLOR
PROTECTION

TREATMENT
STEP

Spray **K lotion** on washed, towel dried hair.

Make sure the product is evenly distributed using a fine toothed comb.

Style without washing.

ENERGIZING
ANTI HAIRLOSS

STEP 1 PREPARATION



Wet the hair with abundant water before applying **Rescue Shampoo**.



Apply an adequate amount to the scalp and massage with circular motions. Repeat the process and massage for 3 more minutes.



Rinse with abundant water.

RESCUE

STEP 2 TREATMENT



Apply the **Rescue Lotion** directly to the scalp (not on the hair!) and increase the amount where the hair is thinner or where hair loss is more visible.



Massage gently until the product is fully absorbed.



Do not wash it out. Wait a minute and then style as desired.

CLEANING
ANTI DANDRUFF

STEP 1
PREPARATION



Apply **Clarity Fluid** to the scalp before the shampoo.



Massage it with a gentle, circular motion so that dandruff will be easier to detach and remove.



Let it work for a few minutes, do not wash it out. Instead, add a few drops of water and then wash it using **Clarity Shampoo**.



Repeat the process and massage it in with a circular movement for 3 minutes. Then wash hair thoroughly.

STEP 2
TREATMENT



Apply **Clarity Mask** to towel-dried hair, distributing the product on the scalp and on the roots.



Massage it until it has been fully absorbed. Let it work for a few minutes, then wash it out.



Rinse thoroughly with lukewarm water.

CLARITY

SCRUBBING
DRY SCALP

STEP 1
PREPARATION



Wet the hair and apply a reasonable amount of **Clarity Shampoo**.



Massage gently during 2/3 minutes.



Rinse and repeat the procedure.

STEP 2
TREATMENT



Apply **Clarity Mask** on washed towel-dried hair, distributing it on the scalp and on the roots.



Massage it to make absorption easier.



Leave for a few minutes, then rinse with abundant lukewarm water.

BALANCING
ANTI-SEBUM

STEP 1
PREPARATION



Apply **Balance Shampoo** on washed towel dried hair.



Massage on the scalp with a circular movement



Leave for **3 minutes** so that cleansing agents can perform, adding tone, scalp hygiene, volume.



Rinse with lukewarm water.

STEP 2
TREATMENT



Apply **Balance Mask** to towel-dried hair, distributing the product on the scalp and on the roots.



Massage it until it has been partially absorbed. Let it work for a few minutes, then wash it out



Rinse thoroughly with lukewarm water.

BALANCE

EQUILIBRIUM
HYPERIDROSIS

STEP 1
PREPARATION



Measure out **Balance Shampoo** in a bowl and apply on dry hair using a brush.



Massage with a light, circular movement.



Leave for **3 minutes**.



Rinse with abundant water and towel-dry.

STEP 2
TREATMENT



Apply **Balance Shampoo** on towel dried hair.



Massage on the scalp with a circular movement.



Leave for **3 minutes** so that cleansing agents can perform, adding tone, scalp hygiene, volume.



Rinse with lukewarm water.

EASY CARE T

artēgo
CARE FOR BEAUTY

VIA PONTINA VECCHIA KM 33,600
00040 ARDEA (RM) ITALY

MYARTEGO.COM